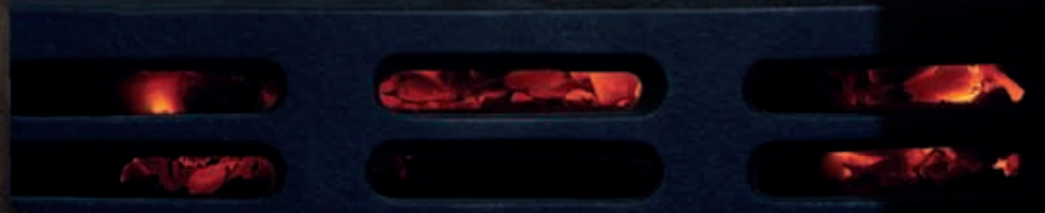


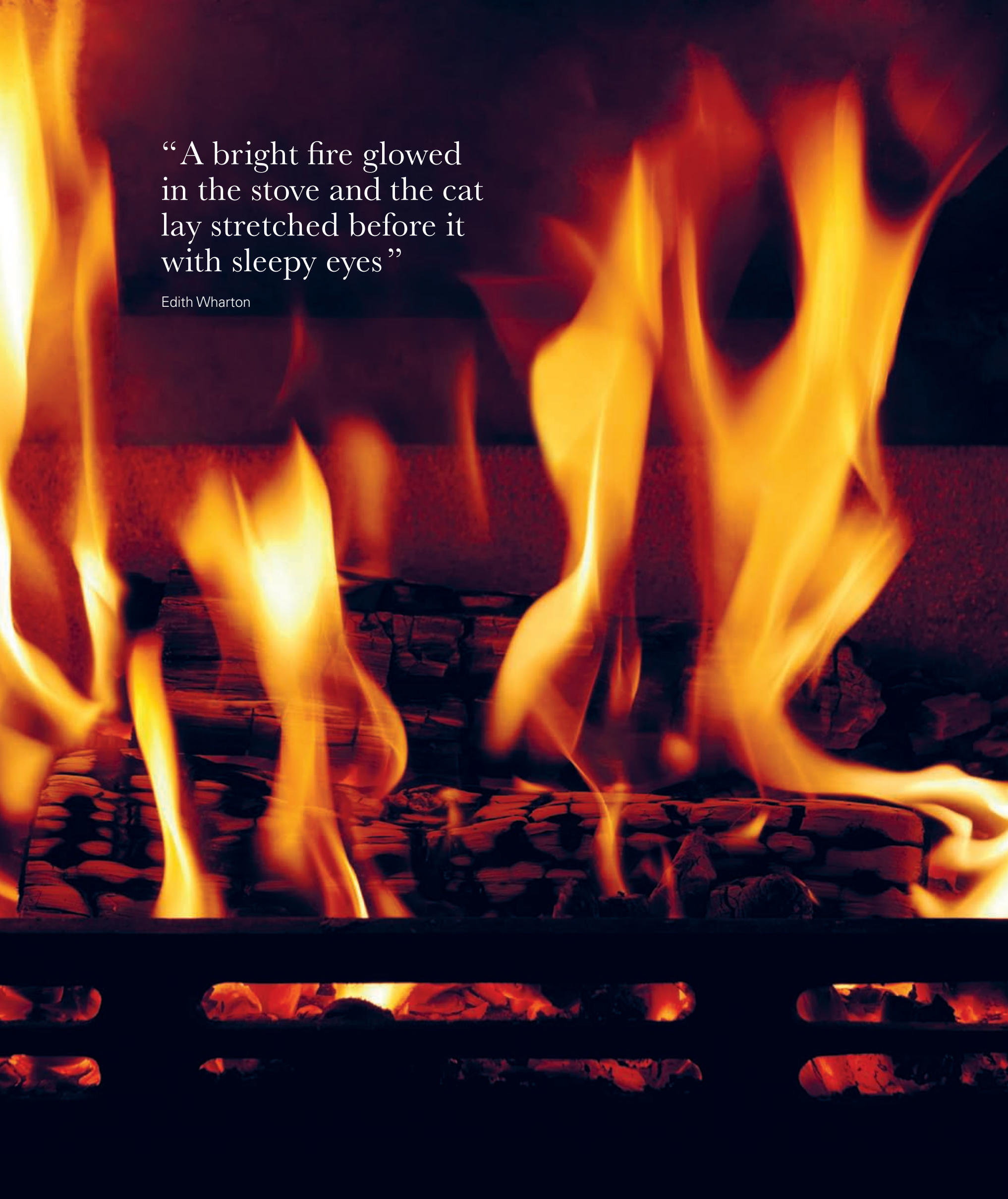
CHESNEY'S

STOVE COLLECTION

Alpine



Chesneys



“A bright fire glowed
in the stove and the cat
lay stretched before it
with sleepy eyes”

Edith Wharton

Contents

CHESNEY'S

A lifestyle choice	4
Five reasons to buy a Chesney's stove	7

Chesney's Stove Collection

Belgravia	8
Alpine	12
Milan	16
Apollo	18

Chesney's National Trust Stove Collection

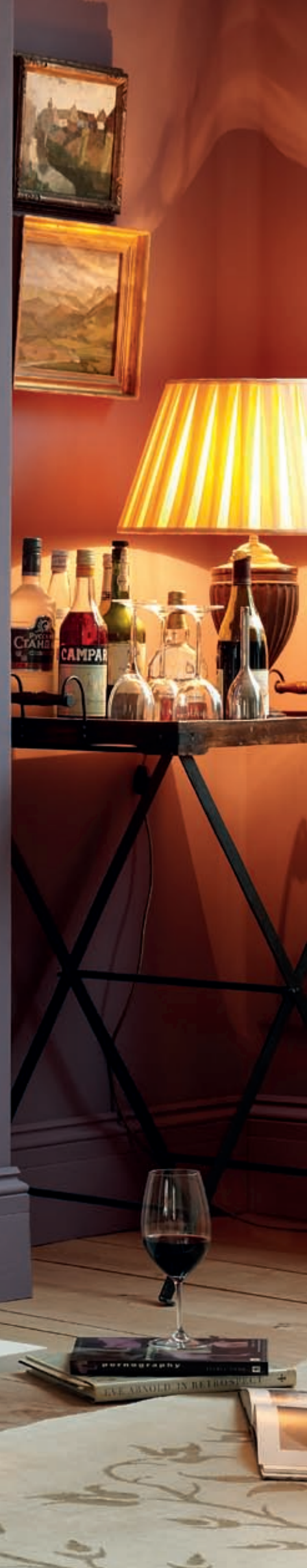
Flatford	22
Barrington	26
Petworth	30
Hampstead	32

How to get the best out of your stove	37
Technical details	38
Colour palette	40



THE NATIONAL TRUST

The Barrington 6 kilowatt stove in ivory paint finish is shown with the Burlington limestone surround from Chesney's collection of hand carved fire surrounds.



An introduction to Chesney's Stove Collection

Over the past quarter of a century Chesney's has created a range of hand carved fire surrounds that are widely recognised as the finest in the world. This reputation has been achieved by a rigorous and uncompromising commitment to the finest craftsmanship and integrity of design.

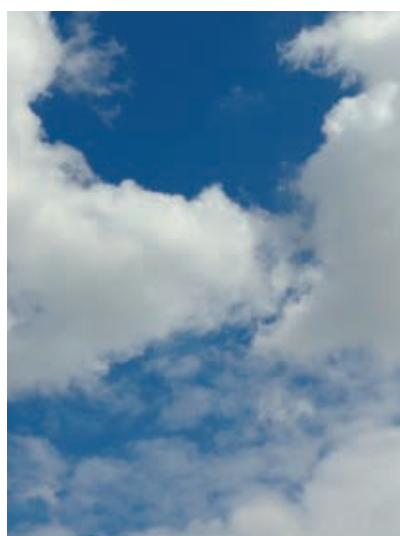
Now, following an exhaustive programme of research and development, Chesney's is manufacturing a unique range of wood burning stoves that employ the very latest technology to deliver outstanding levels of efficiency with minimal emissions.

But a stove should be more than an efficient heating appliance. It should be a significant element in the design of a room and its main focus when lit. Chesney's has produced a sophisticated range of designs incorporating both traditional and contemporary styles.

Chesney's is very proud that a number of stoves within its collection enjoy the support of The National Trust. The Trust is firmly committed to the protection of the environment and views the use of a clean burning generation of stoves as an important contribution to cleaner air and enhanced energy conservation derived from a renewable energy source.

A lifestyle choice

A wood burning stove will allow you to heat your home using a genuinely renewable and natural fuel in the most efficient way possible to provide maximum heat with the minimum of emissions.



Environmentally friendly

The burning of wood makes sound environmental sense whereas fossil fuel energy reserves such as oil, gas and coal are finite and their use causes climate change. A healthy tree produces oxygen by absorbing carbon dioxide from the air.

During the combustion process, the wood will produce the same amount of carbon dioxide as it absorbed during its growth, meaning that the process is wholly carbon neutral. Burning wood will also produce no more carbon dioxide than would be released by a tree that is left to decay naturally.

Effective source of heat

An open fire loses a substantial proportion of the heat that it generates through the chimney and pulls large volumes of air out of the room. When an open fire isn't in use it continues to draw air up the chimney draining warmth from the home and creating draughts.

By contrast a stove is capable of achieving an efficiency rating of up to 85% when in use, eliminating the heat loss that results from an open fireplace and when not in use, it will prevent heat from escaping up the chimney.

Economical and beautiful

Traditional energy sources can no longer be relied on to provide a stable and fairly priced supply. Using a wood stove to heat a room offers the opportunity to exercise some degree of independence from the large utilities and to benefit from a heat source that can be far more economical.

Heating your home with a stove will provide warmth that no other energy source can equal. The flame patterns that a stove will create are captivating, constantly changing and will bring a welcoming and heart warming presence to any room.

Responsible woodland management, including coppicing for fuel, can protect and preserve our woodlands.





Cast iron components found in Chesney's stoves are produced at one of the UK's oldest foundries.

Five reasons to buy a Chesney's stove

When we decided to produce a range of stoves we asked our engineers and designers to create a stove that would be the best – totally dependable, ultra efficient, environmentally friendly, easy to use and great to look at. And that's exactly what they've done.



Reliable

Our stoves are designed to last. Using only the very best materials, including cast iron components produced in British foundries, the toughest ceramic glass and environmentally friendly recycled steel, our stoves will provide a safe and dependable source of heat for years to come. Our confidence in the product is reflected in the five year guarantee we offer for the bodies of our stoves and the one year guarantee we offer for all non-consumable body parts.

Efficient

Our sophisticated manufacturing process uses state-of-the-art robotic welding techniques which ensure that every stove is tightly sealed. This means that the air supply to the stove can be easily controlled, reducing for

a slow burn or opening up for an intense, roaring fire. Our stoves also incorporate the latest clean-burn and air-wash technology delivering maximum warmth and underpinning the outstanding efficiency rating that they have demonstrated in independent testing.

Clean

The clean-burn and air-wash technology which our stoves use means that the polluting by-products emitted by the initial burning are re-ignited and burnt again in the stove. This double combustion substantially reduces emissions and contributes to a cleaner, healthier environment. All of our stoves are either approved for use in smoke control areas or are awaiting formal approval following successful testing. This means that a Chesney's stove can be safely and legally used to burn logs in all major cities and towns throughout the UK.

Easy to use

One of the most important challenges facing our engineers was to design a stove that was genuinely easy to use. In addition to a simple fuel selector, a Chesney's stove is operated by means of a single air control lever. With its smooth operation, this lever allows easily controlled temperature adjustment from a gentle flame to an intense burn.

Attractive

Stoves have for too long just been viewed as utilitarian heating appliances with little emphasis on their appearance. Our collection of stoves is beautifully designed to include both traditional and contemporary styles to suit a wide range of interiors.

The Belgravia

The Belgravia displays the strong architectural styling that characterises every stove in the Chesney's range. Its classical plinth, cornicing and dome shaped viewing glass combine to create an elegant stove of handsome proportions.

It is available as a six or eight kilowatt multi-fuel stove and a four kilowatt wood burning stove.

The Belgravia 6 kilowatt stove is shown in sage green paint finish and the Burlington limestone surround from Chesney's collection of hand carved fire surrounds.

DETAILS

Full specifications
Pages 38–39







The refined and understated appearance of the Belgravia allows it to sit comfortably within the most elegant of period rooms or to be used as a signature piece within a contemporary setting.



Belgravia 8 Black anthracite



Belgravia 6 Sage green



Belgravia 4 Ivory

The Belgravia 8 kilowatt stove is shown in sage green paint finish.

DETAILS

Full specifications
Pages 38–39





The Alpine

The Alpine stove with its imaginative retro styling is quite unique. Whether in a paint finish or lustrous enamel, its nickel plated ornamentation and rounded lines combine to create a stove that is visually stunning.

The Alpine is available as a six kilowatt multi-fuel stove and a four kilowatt wood burning stove.

The Alpine
6 kilowatt stove
finished in atlantic
blue paint is
shown with
the Devonshire
limestone surround
from Chesney's
collection of
hand carved
fire surrounds.

DETAILS

Full specifications
Pages 38–39



The design of the Alpine stove lends itself to a variety of eye-catching enamelled finishes and the six kilowatt stove is shown here in claret red enamel which provides a perfect contrast to the satin brushed nickel door furniture and grille.



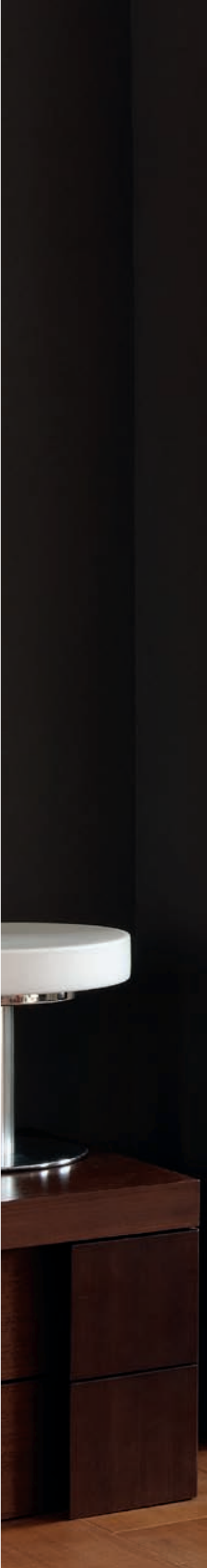
Alpine 6 Claret red enamel



Alpine 4 Atlantic blue

The Alpine 6 kilowatt stove in claret red enamel perfectly suits a more contemporary interior. Shown with the limestone Clandon Bolection surround from Chesney's collection of hand carved fire surrounds.

DETAILS
Full specifications
Pages 38–39





The Milan
6 kilowatt stove
is shown in silver
paint finish.

DETAILS

Full specifications
Pages 38-39



The Milan

The Milan is the ideal choice of stove for a contemporary setting. Its sleek cylindrical lines allow it to stand within a room and provide an attractive and highly effective source of heat.

It is available as a six kilowatt multi-fuel stove and a four kilowatt wood burning stove.



Milan 6 Silver



Milan 4 Silver





The Apollo

The Apollo inset stove provides a stylish and versatile alternative to a free-standing stove. Its minimalist styling means that it will suit a wide range of interiors.

It is available as an eight kilowatt multi-fuel stove and a four kilowatt wood burning stove.

The Apollo
4 kilowatt stove
is shown with
a bespoke sized
Metro limestone
surround from
Chesney's
collection of
hand carved
fire surrounds.

DETAILS

Full specifications
Pages 38–39

The eight kilowatt Apollo stove offers a landscape view of a live fire and its proportions make it the ideal choice where an inset stove is the focal point of a room in the absence of a traditional fireplace arrangement.



Apollo 8 Silver



Apollo 4 Silver

The Apollo
8 kilowatt stove
in silver paint
finish with a
limestone frame.

DETAILS

Full specifications
Pages 38–39





The Flatford

A design inspired by the simple and uncluttered interiors of Bridge Cottage, a National Trust property at Flatford Mill in Suffolk.

The reliability and efficiency of this multi-fuel stove are reflected in its robust traditional appearance. As with all the stoves in the Chesney's collection, it has a solid cast iron door housing a large glass window that allows the fire to be enjoyed in all its beauty and variety.

The Flatford is available as a six and eight kilowatt multi-fuel stove and a four kilowatt wood burning stove.

“The National Trust views the use of clean burning wood stoves as a valuable contribution to cleaner air and enhanced energy conservation.”

The Flatford
8 kilowatt stove
in black anthracite
paint finish sits
comfortably within
a traditional brick
fire chamber.

DETAILS

Full specifications
Pages 38-39



With its simple good looks, the Flatford stove will sit comfortably in a wide range of interiors. It can also be very successfully combined with an attractive stone fire surround as in the facing image.



Flatford 8 Black anthracite



Flatford 6 Black anthracite



Flatford 4 Black anthracite

The Flatford 8 kilowatt stove in black anthracite paint finish is shown with the Marseilles stone surround from Chesney's collection of hand carved fire surrounds.

DETAILS
Full specifications
Pages 38–39





The Barrington

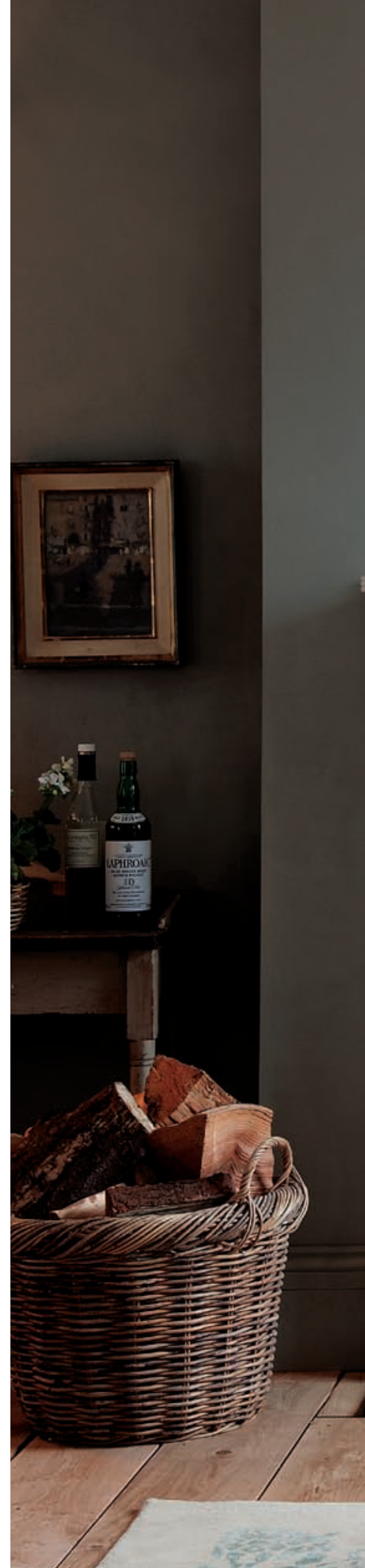
With its elegant and refined appearance, the Barrington stove draws its inspiration from the delicate interiors and fine furniture of Barrington Hall, a neo-classical mansion owned by The National Trust.

The Barrington is available as a six and eight kilowatt multi-fuel stove and a four kilowatt wood burning stove.

The Barrington 8 kilowatt stove in sage green paint finish is shown with the Langley statuary marble surround from Chesney's collection of hand carved fire surrounds.

DETAILS

Full specifications
Pages 38–39





With its classical detailing and handsome appearance, the Barrington is an elegant addition to the decorative scheme of any room.



Barrington 8 Black anthracite



Barrington 6 Sage green



Barrington 4 Black anthracite

The Barrington 8 kilowatt stove is shown in an ivory paint finish that complements its refined appearance.

DETAILS
Full specifications
Pages 38–39





The Petworth 8 kilowatt stove in black anthracite paint finish is shown with the Alhambra limestone surround from Chesney's collection of hand carved fire surrounds.

DETAILS
Full specifications
Pages 38–39



The Petworth

The Petworth stove echoes the handsome architecture of one of The National Trust's most important properties, Petworth House in West Sussex. A robust plinth and detailed corniced mouldings reflect the attention to design detail that characterises every Chesney's stove.

The Petworth is available as both a six and eight kilowatt multi-fuel stove.

 THE NATIONAL TRUST *collection*



Petworth 8 Black anthracite



Petworth 6 Sage green

The Hampstead

The Hampstead stove takes its name from The National Trust's Modernist house in Willow Road, Hampstead in North London. Its simple clean lines make it the ideal interior to a contemporary architectural limestone fire surround.

It is available as a six or eight kilowatt multi-fuel stove and a four kilowatt wood burning stove.

“We need to do all we can to use resources which contribute to the solution of climate change, such as wood instead of oil.”

The Hampstead 8 kilowatt stove is shown with the Burlington limestone surround from Chesney's collection of hand carved fire surrounds.

DETAILS

Full specifications
Pages 38–39



With its modern linear design this stove will sit comfortably in a wide range of modern interiors. Installed either as a free-standing unit or within a fire chamber, the Hampstead provides an attractive and heat efficient focal point to a room.



Hampstead 8 Silver



Hampstead 6 Silver



Hampstead 4 Silver



Hampstead 6 XLS Silver



Hampstead 6 LS Silver

The versatile Hampstead 8 kilowatt stove can be positioned in an existing alcove or in a suitable area within the room.

DETAILS
Full specifications
Pages 38–39







The timber that you use
for your stove should only
come from woodlands that
are managed sustainably.

How to get the best out of your stove

Using and maintaining your stove in the correct way will contribute to its efficiency and longevity and maximise the beneficial effect that its use will have on the environment.



Chimney draught

A good chimney draught is essential if you are to obtain the optimum performance from your stove.

There are many variable factors that affect the performance of a chimney and your local Chesney's stockist will be able to advise you on the suitability of your chimney for use with a stove. If you do not have a chimney it is possible to have a prefabricated chimney system installed which is compatible with a multi-fuel stove. It is important that you have your chimney cleaned once a year by a NACS (National Association of Chimney Sweeps) registered sweep.

Fuel

It is essential that you burn seasoned dry firewood with a moisture content of less than 20%. Burning wet wood will adversely affect the performance of your stove, creating tar deposits in the chimney and causing the glass in the stove door to blacken. Use of

a moisture meter will allow you to check that the moisture content of any wood that you are intending to purchase is satisfactory.

If you are supplying your own firewood, it should be stored for at least a year after cutting and splitting to enable it to dry out. Storage should be in a dry well aired location. Hardwood will generally burn for longer than softwood and the latter will make better kindling as it lights easily. Sources of wood such as decking, fencing, demolition materials, painted or treated wood, driftwood or rubbish should under no circumstances be used as fuel for your stove. See The National Energy Foundation website (www.nef.org.uk/logpile) for a database of wood fuel suppliers.

We would strongly recommend that for environmental reasons wood is used as the fuel for your stove, but where coal is your choice of fuel please ensure that it is not petroleum based.

For advice on solid fuel contact an approved coal merchant or call the Solid Fuel Association advice line on 0845 601 4406 or visit their website at www.solidfuel.co.uk.

Maintenance

The door seals of the stove should be regularly checked to ensure that there is an airtight seal. If the sealing rope is not intact it will result in draughts entering the stove which affect its combustion efficiency. The fireproof bricks that line the stove should also be checked for signs that they may be starting to crumble. It is acceptable for cracking to be seen but not disintegration of the bricks as this will reduce the insulation in the firebox leading to low temperatures and inefficient combustion.

It is also important that the ashpan is not allowed to overflow as the hot ash can cause the grate of the stove to distort.

Provision of ventilation

All stoves require air for combustion. To comply with Building Regulations (Document J) any stove with a maximum heat output of over five kilowatts will require its own dedicated supply of air by means of an air vent.

Installation

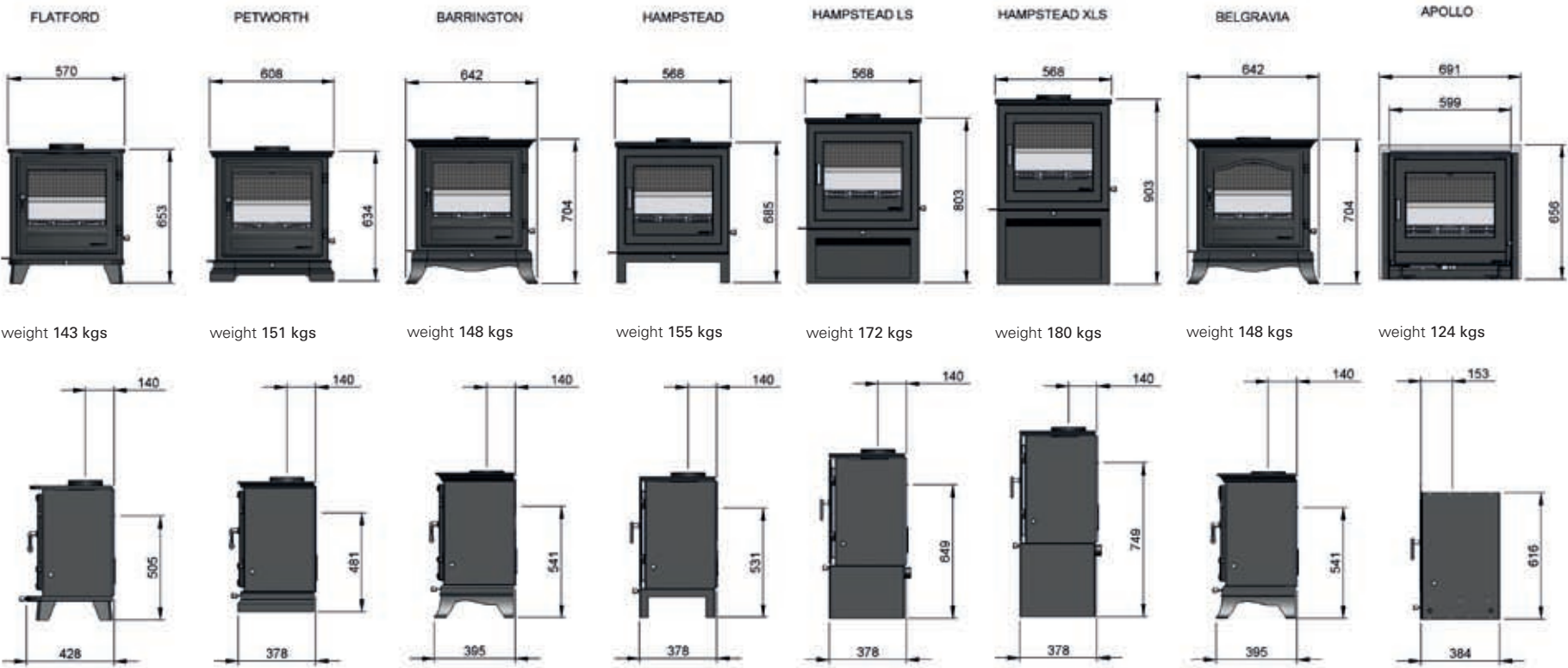
Your stove and flue must be installed by a HETAS approved installer. HETAS is the governing body for the installation of wood burning and solid fuel appliances and its approved installers have all completed the training course necessary to obtain accreditation.

SPECIFICATIONS

	NOMINAL OUTPUT	HEAT OUTPUT RANGE	MAXIMUM LOG LENGTH	FLUE OUTPUT TOP OR REAR	NET EFFICIENCY	CLEARANCE TO COMBUSTIBLES	
8 SERIES	8 kW to room	6 – 10.5 kW	14 "	150mm (6") diameter	76%	Sides Rear Top	600mm 650mm 400mm
6 SERIES	7 kW to room	5 – 9 kW	11"	150mm (6") diameter	84.6%	Sides Rear Top	650mm 500mm 300mm
MILAN 6 SERIES	6 – 8 kW to room	5 – 9 kW	11 "	150mm (6") diameter	80.6%	Sides Rear Top	200mm 45mm 300mm
4 SERIES	4.6 kW to room	3 – 6 kW	10 "	127mm (5") diameter	83.9%	Sides Rear Top	350mm 400mm 300mm
MILAN 4 SERIES	4.6 kW to room	3 – 6 kW	10 "	127mm (5") diameter	80%	Sides Rear Top	125mm 45mm 300mm

The above specifications apply to all stoves in the Chesney’s collection with the exception of the Apollo 4 and 8 series, where test results are pending.

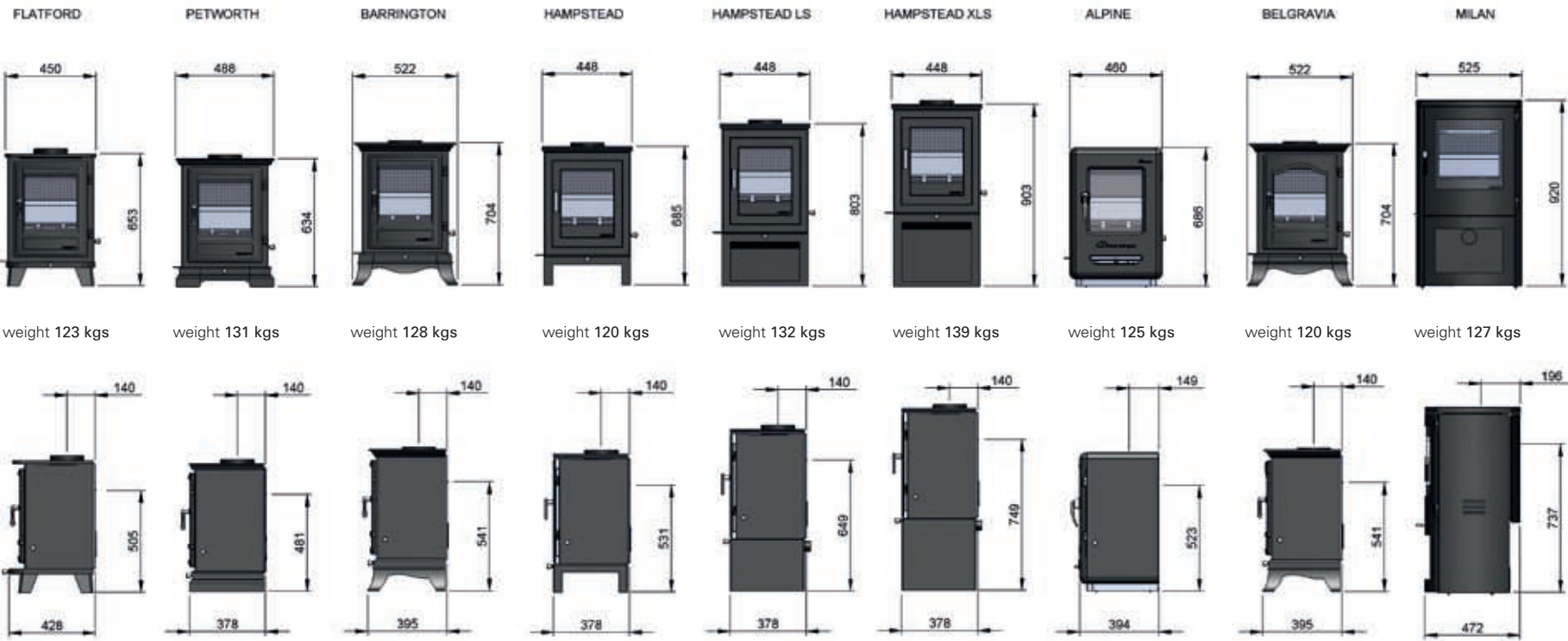
8 SERIES



Approved to EN: 13240

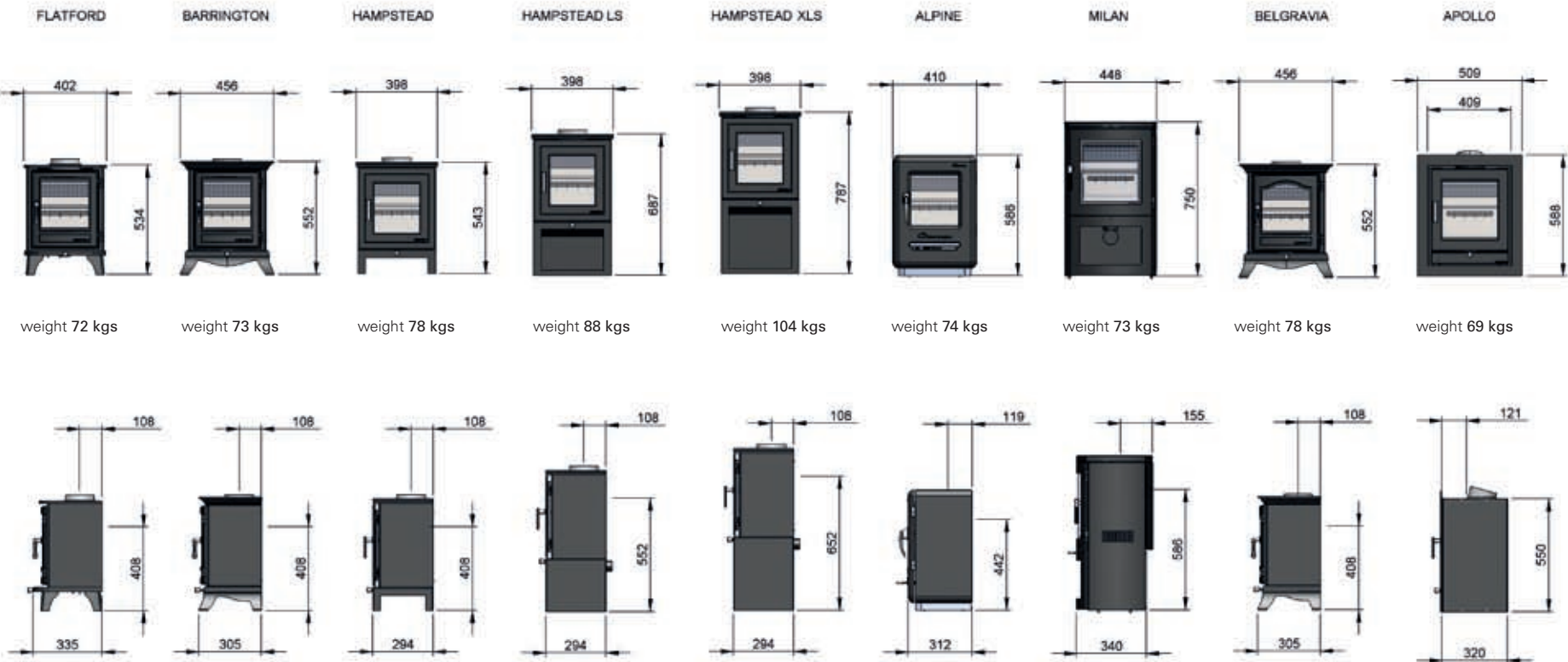
APPROXIMATE OVERALL DIMENSIONS SHOWN

6 SERIES



Approved to EN: 13240 and smoke control exempt

4 SERIES



Approved to EN: 13240 and smoke control exempt

APPROXIMATE OVERALL DIMENSIONS SHOWN

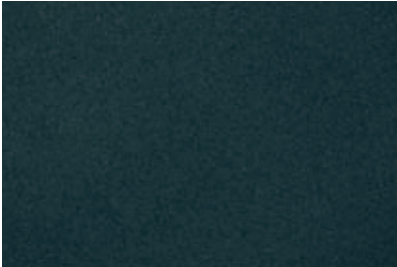
Colour palette

We believe that a stove doesn’t have to be black. Our range of matt and enamel colours allows you the flexibility to select a colour for your stove that will suit the decorative scheme in your home.

MATT FINISH



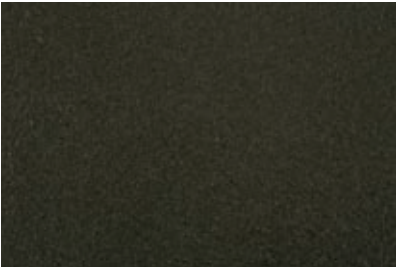
Sage green



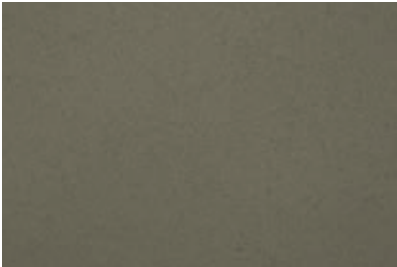
Atlantic blue



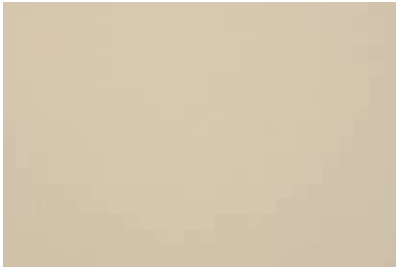
Terracotta



Black anthracite



Silver



Ivory

All stoves are available in the matt finish

ENAMEL FINISH



Black



Royal blue



Claret red

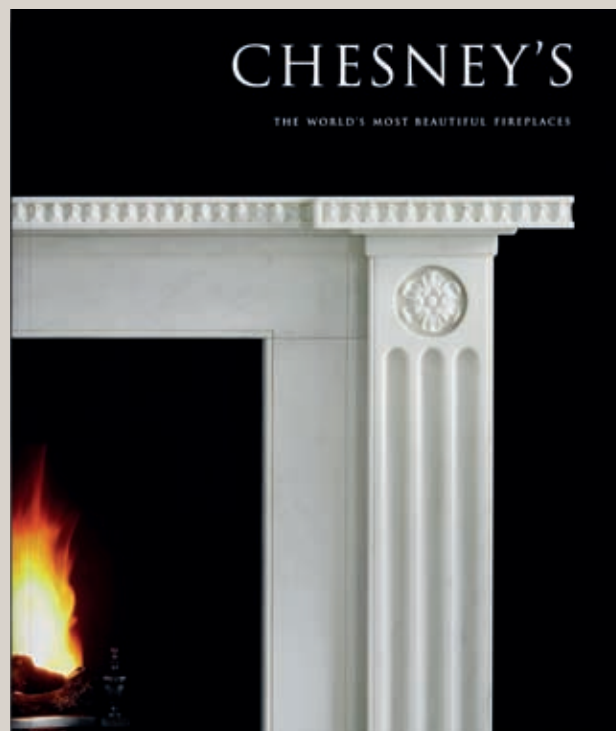


Cream

Only the Alpine range of stoves are available in enamel finish

PLEASE NOTE The colour chart above is intended as a guide only

A number of the stoves in this brochure have been installed with hand carved chimneypieces from Chesney's range of period and contemporary stone and marble fire surrounds. This is widely acknowledged as the leading collection of its kind in the world, and also includes a wide selection of fire baskets, fire dogs, andirons, fire tools and register grates. A separate 100 page full colour brochure is available illustrating this range.



Acknowledgements

The Odd Chair Company 01772 691777

Morris chair, page 23

Gallery 25 020 7730 7516

Chair, page 29

Veeton Fleece 01483 575758

Rugs, pages 9 and 27

Ebury Trading Ltd 020 7881 0881

Chair, page 21

Brochure design Conran Design Group

© Chesney's MMX

Chesney's pursues a policy of continuing improvement in design and performance of its products. The right is therefore reserved to vary specifications without notice.

in association with

 **THE NATIONAL TRUST**

Showrooms

London

194/200 Battersea Park Road,
London SW11 4ND
Telephone 020 7627 1410
Fax 020 7622 1078

734-736 Holloway Road,
London N19 3JF
Telephone 020 7561 8280
Fax 020 7561 8288

Email: sales@chesneys.co.uk

For details of UK nationwide stockists:
020 7501 4279

www.chesneys.co.uk

New York

Suite 244, 2nd Floor,
D&D Building, 979 Third Avenue,
New York NY 10022
Telephone 001 646 840 0609
Fax 001 646 840 0602
Email: newyorksales@chesneys-usa.com

For details of US nationwide stockists:
001 404 948 1111

www.chesneys-usa.com

CHESNEY'S

in association with



THE NATIONAL TRUST